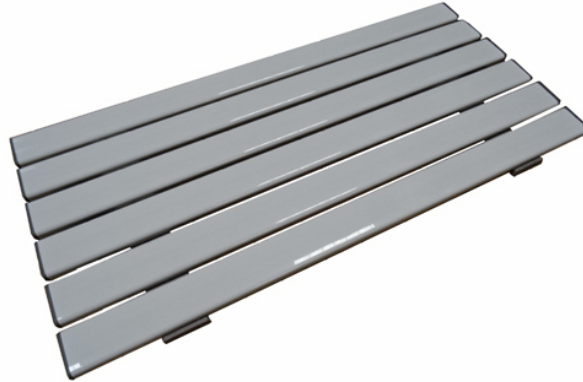


Slatted Shower Boards 26" , 27" & 28" – 90254, 90255 & 90256 (6-Slat)



Description

This bath / shower board has been designed as a unique & versatile product to provide additional height when sitting in a bath to provide added comfort to the user.

There are three different lengths (26" , 27" & 28") which should be selected to match the overall width of your bath (Excluding the bath panel).

Instructions for Use:

- Loosen the wing nuts on the underside of the board and slide both brackets towards the centre.
- Place the Bath / Shower Board on top of the bath, ensuring that the board sits evenly on both sides.
- Push each bracket towards the edge of the bath until they touch the inside edge of the bath.
- Secure the brackets by tightening the wing nuts until the board is unable to move.

Make sure that you have read the safety section before using the seat for the first time. The bath / shower boards are available in three lengths: 26" , 27" & 28" , each of these having either 4 slats (bath boards) or 6 slats (shower boards).

These boards are designed for a user to sit and be able to bathe, wash or shower in comfort. The boards have a Max. user weight limit of 190Kg. (30stone)

Always consult your health care professional for advice on using the product safely and transferring either to or from the bath.

Technical Specifications

Product Code	Length	Width	Height
90254 (6-slat)	66cm (26")	36cm (14")	2cm (¾")
90255 (6-slat)	69cm (27")	36cm (14")	2cm (¾")
90256 (6-slat)	71cm (28")	36cm (14")	2cm (¾")

The maximum user weight for all boards is 190Kg (30 stone).

The bath / shower boards are constructed from sturdy & lightweight PVC plastic.

Cleaning

Always remove the board from the bath and remove the brackets before cleaning. All parts should be cleaned periodically. Use a non-abrasive mild detergent along with warm water & a soft cloth to clean the step. Rinse with clean warm water & a soft dry cloth. If disinfecting is required, a mild disinfectant that will not cause damage to plastics should be used.

DO NOT use any form of abrasive cleaner, cloth or sponge with this product as this could cause damage to the product. Strong acid, alkaline or products containing these chemicals may cause damage or discolouration to the product and should not be used.

After cleaning or disinfecting, all of the parts should be showered down or wiped over with a damp cloth **before** the bath board is used on the bath again.

Autoclave cleaning is **NOT** recommended, as this can cause damage to the plastics used in the construction of the bath board.

Safe Use of the Bath / Shower Board:

The bath / shower board is only designed for sitting upon. **DO NOT** stand or otherwise misuse the product.

Do not exceed the stipulated Max. user weight for the board.

Some users may require supervision while using the board. Please consult your healthcare professional for details.

Ensure that the correct length of board for the bath is being used. Ensure that there is no more than 2.5cm (1") of overhang on the edge of the bath when installed.

Ensure that the brackets on the underside of the board are preventing any movement of the board **before** each use. The rubber pads on the brackets **must** be touching the edge of the bath.

Keep this product out of direct sunlight or excessive heat, as this can cause the parts of the product to harden or crack.

Warranty

This product is guaranteed to be free of defects in materials or workmanship for one year from date of purchase.

This product has been built to high standards of workmanship and has been carefully inspected prior to shipment. This warranty is an expression of the confidence we have in the workmanship and materials used in our products.

In the unlikely event of there being a defect found with the product, please contact your supplier and they will either replace the product or supply parts for the product to be repaired at their discretion.

This warranty does not cover failure of the device caused by misuse, negligence or fair wear and tear of the product.

Disposal

This entire product should be recyclable at your local recycling centre. Please contact your local recycling centre to determine if they currently recycle PVC plastic. All of the fixings are made from Stainless Steel & should also be recyclable at your local recycling centre.

